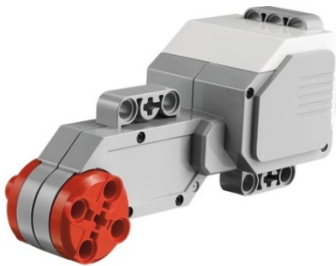


PUPPY PARTS LIST



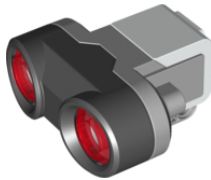
1x EV3 Brick



2x Large Motors



1x Medium Motor



1x Ultrasonic Sensor



1x NXT Sound Sensor



3x Short Cables (25cm)

PUPPY PARTS LIST



2x Medium Cables (35cm)



2x Tires and Wheel Rims



4x Dk Gray Belt Wheel (Pulley)



2x Dk Gray Cross Axle 8M with End Stop



6x Lt Gray Axle 3



2x Black Axle 4

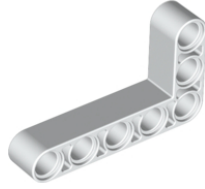


2x Lt Gray Axle 5

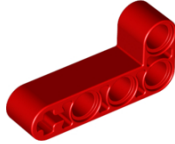


2x Black Technic Beam 3M

PUPPY PARTS LIST



6x White Technic Angular Beam 90° 3 x 5



6x Red Technic Angular Beam 90° 2 x 4



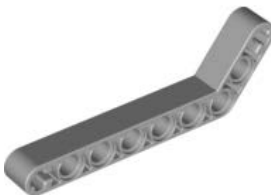
1x White Technic Beam Double 1 x 11.5 Bent



1x White Technic Beam 1 x 7 Bent (4-4)



2x Black Technic Beam 1 x 9 Bent (6-4)



4x Lt Gray Technic Beam 1x9 Bent (7-3)

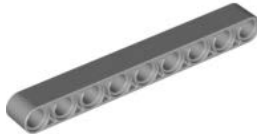
PUPPY PARTS LIST



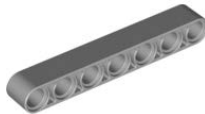
2x White Technic Beam 15M



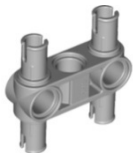
1x Lt Gray Technic Beam 11M



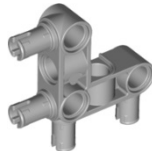
5x Lt Gray Technic Beam 9M



2x Lt Gray Technic Beam 7M



2x Lt Gray Beam 3M with 4 snaps



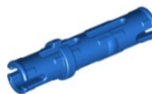
2x Lt Gray Beam 3 x 3 Bent with 4 snaps



43x Black Connector Peg (friction)



15x Blue Axle Pin (friction)



9x Blue Connector Peg 3M (friction)

PUPPY PARTS LIST



6x Lt Gray Full Bushing



2x Red Long Pin (friction) with Stop Bushing



2x Black Rubber Double Axle Connector



2x White Tooth 1 x 3 with axle hole



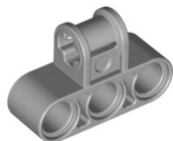
2x Black Axle and Pin Connector Perpendicular Double



2x Black Axle and Pin Connector Perpendicular 3 (with Center Pin Hole)



3x Dk Gray Axle and Pin Connector 3 (with 2 Pin Holes)



1x Lt Gray Axle and Pin Connector Perpendicular Triple



1x Dk Gray 24 Tooth Gear