

# CASTORBOT PARTS LIST



1x NXT Brick



2x Large Motors



2x Short Cables (25cm)



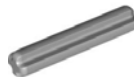
2x Tires and Wheel Rims



2x Lt Gray Belt Wheel (Pulley)



1x Black Cross 2m Axle with Groove



1x Lt Gray 3m Axle

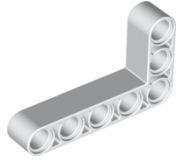


1x Black 4m Axle



3x Lt Gray 7m Axle

# CASTORBOT PARTS LIST



2x White Technic Angular Beam 90° 3 x 5



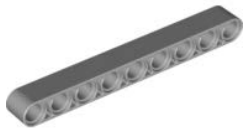
2x White Technic Beam Double 1 x 11.5 Bent



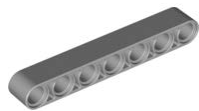
2x White Technic Beam 15M



1x Lt Gray Technic Beam 11M



2x Lt Gray Technic Beam 9M



2x Lt Gray Technic Beam 7M



2x Black Technic Beam 3M



1x Black Module Bush



2x Lt Gray Beam 3 x 3 Bent with 4 snaps

# CASTORBOT PARTS LIST



22x Black Connector Peg (friction)



6x Blue Axle Pin (friction)



4x Blue Connector Peg 3M (friction)



8x Lt Gray Full Bushing



2x Red Long Pin (friction) with Stop Bushing



1x Black Cross Block 2 x 3



2x Black Angle Element 0 Degrees [1]



1x Black Catch with Cross Hole



1x Dk Gray Cross Block/Fork 2 x 2